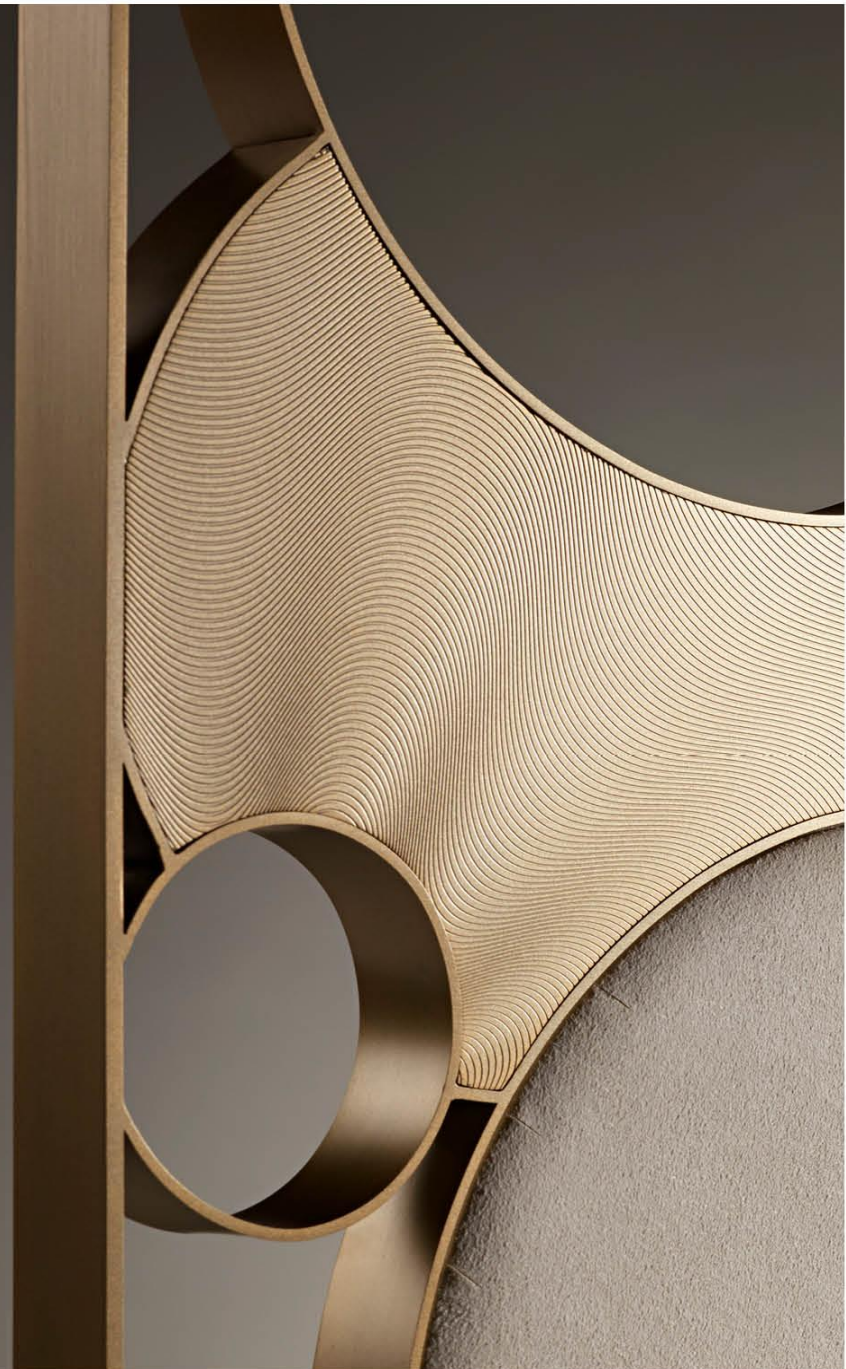




Creators of your Brand's stage

OUR STORY

From the start in 1949 as Atelier Borle, a small family business founded in Mont-sur-Lausanne, Switzerland, Pac Team Group has evolved over the last 70 years to become an industry leader in luxury brand displays, packaging, fixtures and exhibition solutions. With locations on three continents serving customers across the globe, Pac Team is an organization rooted deep in family values and continues to find inspiration from the legendary quality of Swiss engineering, precision and ingenuity. Pac Team has the distinct advantage of a deep heritage, a worldwide footprint and the knowledge and resources to create cutting-edge retail experiences that add the finishing touch to your brand's stage.



OUR MISSION

With a deep heritage, worldwide footprint and the knowledge and resources to create cutting-edge retail experiences, Pac Team Group strives to be an industry leader in luxury brand displays, packaging, fixtures and exhibition solutions serving customers across the globe.



OUR PHILOSOPHY



EXPERTISE ON EVERY LEVEL

From design to construction and logistics to warehousing, fully integrated in-house services give Pac Team complete control over the entire process and assists us in providing the best service possible, regardless of project size or scope.

RELATIONSHIPS MATTER

With 70 years of industry experience, we place tremendous value in our long-standing relationships and esteemed reputation for unparalleled precision, efficiency, reliability and flexibility. We value every partnership like a timepiece—a lifelong commitment to be treasured and handled with care.

A CUSTOM EXPERIENCE

Pac Team exclusively focuses on made-to-measure projects and can seamlessly bridge the gap between your brand's vision and retail execution. Our architects, designers and master craftsmen have the skills, creativity and resources to bring any idea into a three-dimensional reality.

OUR SERVICES

- Design
- Fixture Development
- Engineering Intelligence
- Manufacturing
- Global Sourcing
- Project Management
- Global Warehousing & Logistics
- Inventory Management
- Installation Services
- Customized, reporting & private web-based catalog/ordering systems



PRODUCT CATEGORIES

FLOOR FIXTURES

PERIMETER FIXTURES

CASHWRAPS

BRANDED POP

DECOR FIXTURES

SEATING/FURNISHINGS

DRESSING ROOM SYSTEMS

INCASE DISPLAYS

INTERNAL SIGNAGE/GRAPHICS

PROGRAMMATIC WINDOW DISPLAYS

VISUAL ELEMENTS



MATERIALS

WOOD: solids, reclaimed, veneer, laminate, vinyl

METAL: stainless, plating, custom finishes, powdercoat

PLEXI

GLASS

STONE

SOLID SURFACE

LIGHTING & TECHNOLOGY INTEGRATION

COMPOSITES

INNOVATIVE/SUSTAINABLE MATERIALS

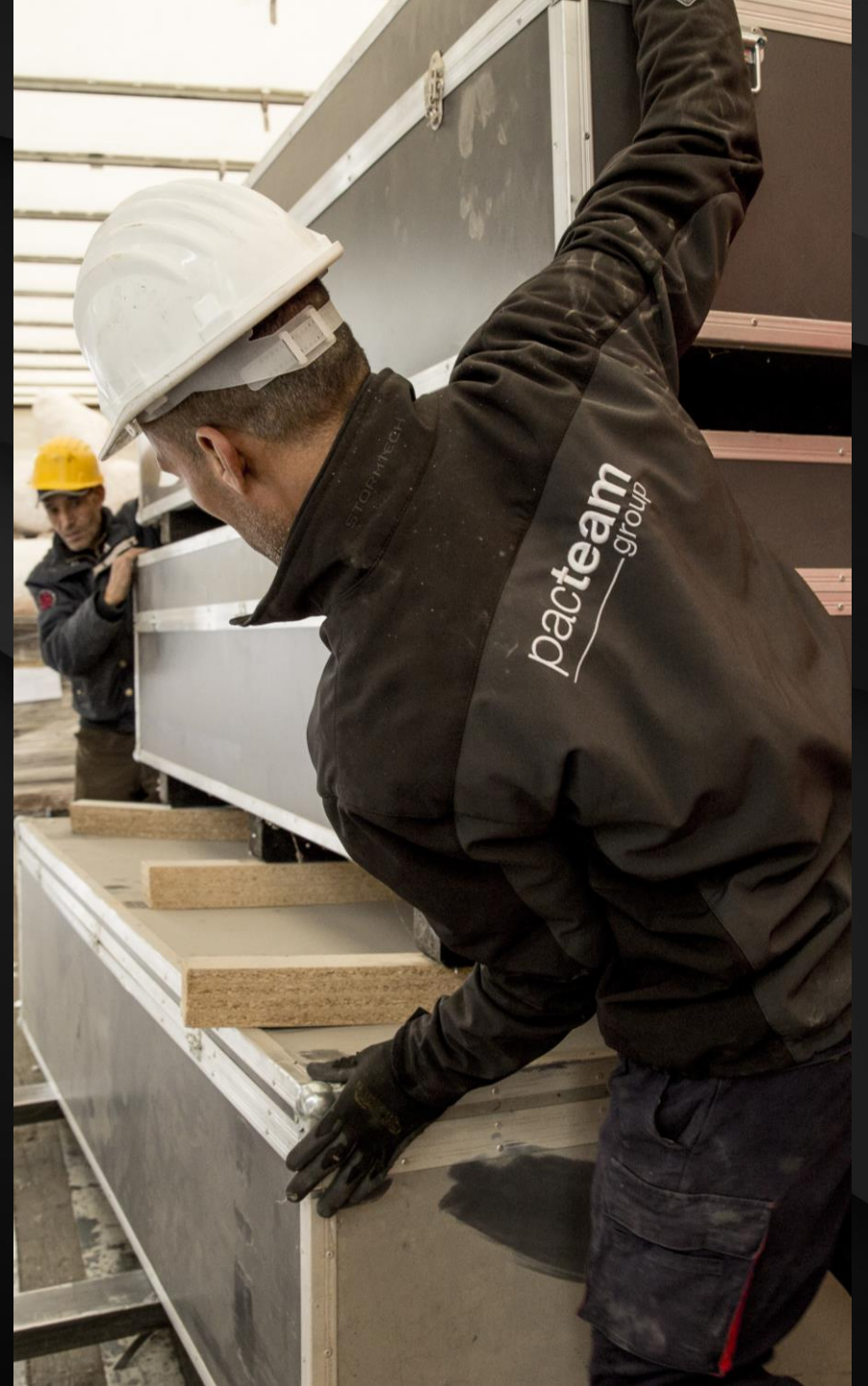


NORTH AMERICAN PRODUCTION

From a single showcase to full boutiques, we are your Retail Construction Partner

Pac Team America has been manufacturing and installing custom designed store fixtures for some of the most successful brands in the world since 2005. Based in Paramus NJ, we are a full service, design and fixture manufacturing company. Pac Team's unique, turnkey approach to managing custom, multi-location rollouts coupled with our logistics capability separates us from all others around the globe.

- USA based high-quality millwork shop
- North American based premium metal fabrication & finishing
- glasswork, acrylic and lighting
- Complete Design/Engineering Services
- Full Development and Prototyping Capabilities
- Global manufacturing integrations to manage all budgetary and scalability needs
- Logistics and Installation Services Nationwide (both non-union and union)



GLOBAL FACILITIES



CREATION: 2011
LOCATION: *DongGuan, China*
SQUARE METERS: 6,600 sqm
WORKSHOPS: 3,672 sqm
OFFICES & SHOWROOM: 900 sqm
WAREHOUSE: 2,000 sqm
TYPE OF WORK: *Displays, POS accessories*
EMPLOYEES: 280
GENERAL MANAGER: *Hui Li*
FINANCE CONTROLLER: *James Huang*



CREATION: 2014
LOCATION: *Turin, Italy*
SQUARE METERS: 15,870 sqm
WORKSHOPS: 5,542 sqm
OFFICES: 690 sqm
STORAGE: 4,500 sqm
TYPE OF WORK: *Furniture, Booths, Shops, Exhibits*
EMPLOYEES: 30
GENERAL MANAGER: *Andrea Vitacchio*
PRODUCTION MANAGER: *Nicola Indraccolo*

OUR CLIENTS

Our services are trusted all over the world.

COACH



KENDRA SCOTT



VACHERON CONSTANTIN
GENÈVE



SHINOLA
DETROIT

Van Cleef & Arpels

CITIZEN

MESSIKA
PARIS

JAMES PERSE

MOVADO



KWIAT
NEW YORK - 1907

SEIKO

HARRY WINSTON

GS
Grand Seiko

Crate&Barrel

RALPH LAUREN

FREDERIQUE CONSTANT
GENEVE

BULOVA

ACCUTRON

COLE HAAN

CASIO®

TIMEX

DIOR

Alpina
1883 GENEVE

Neiman Marcus

OUR WORK

There is no limit to Pac Team Group's capabilities. From the smallest luxury packaging solutions to sleek shop-in-shops, complex millwork, elaborate displays and exquisite exhibition architecture, we have the skills, creativity and resources to bring any idea into a three-dimensional reality.

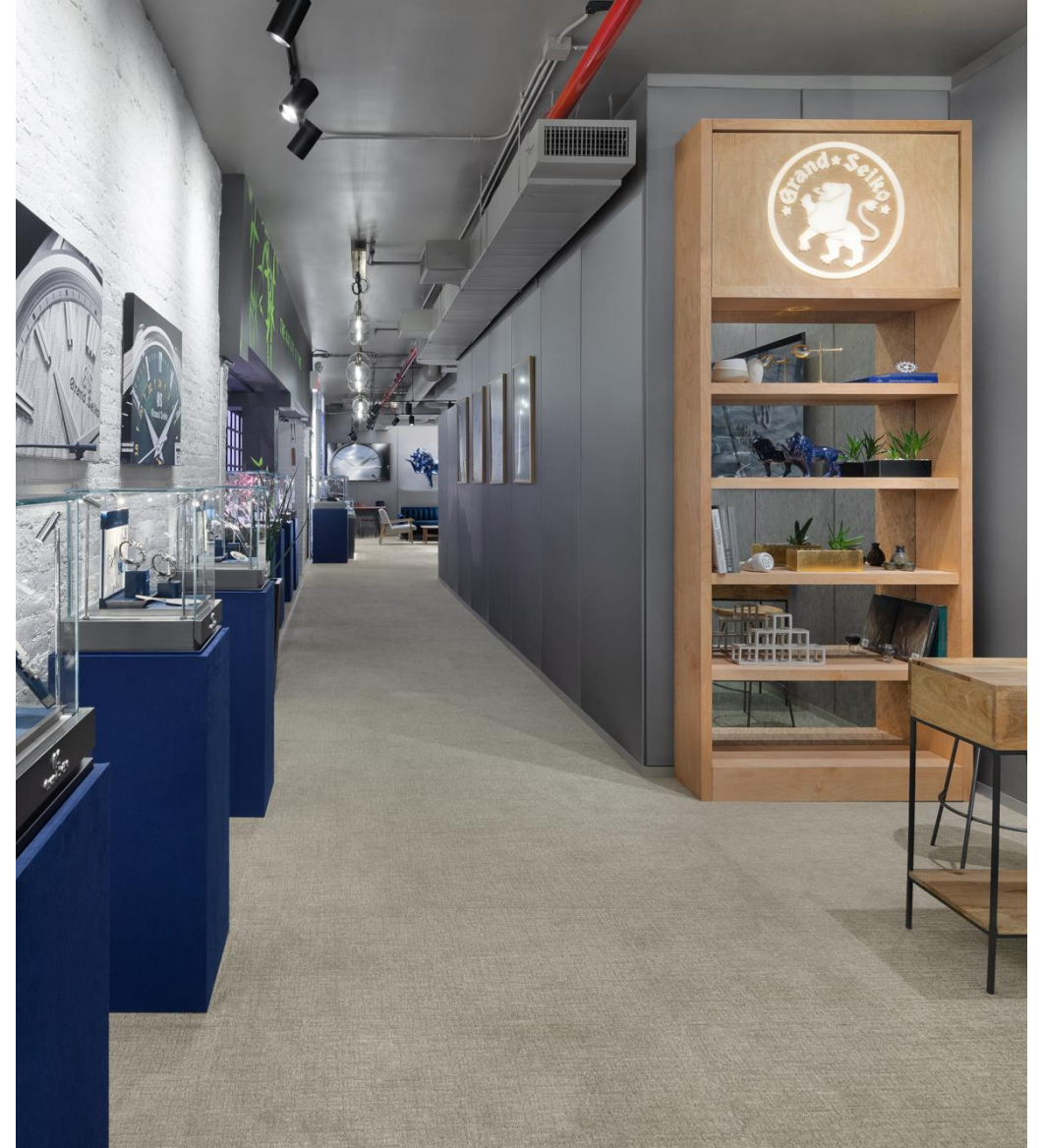


MILLWORK

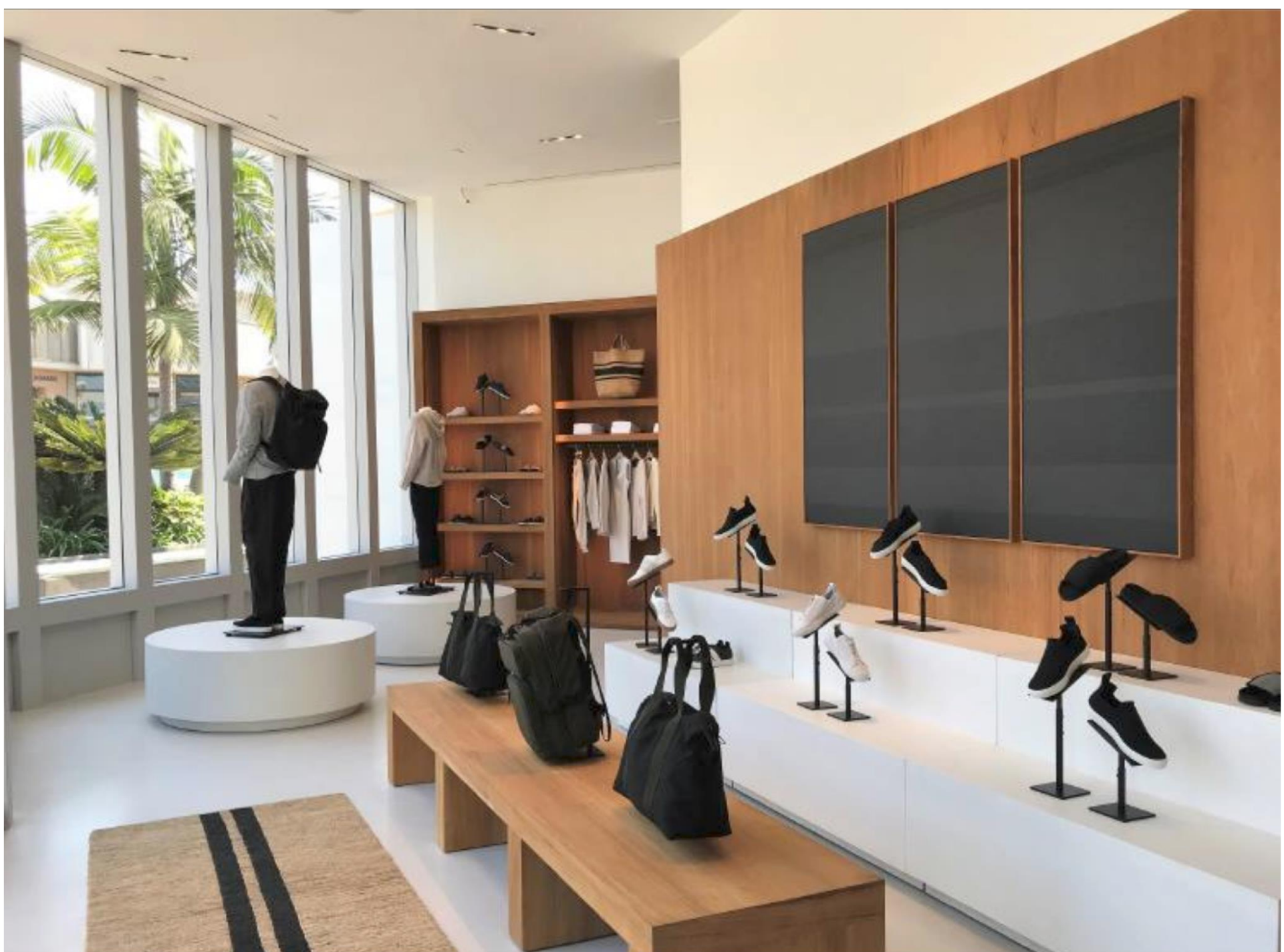












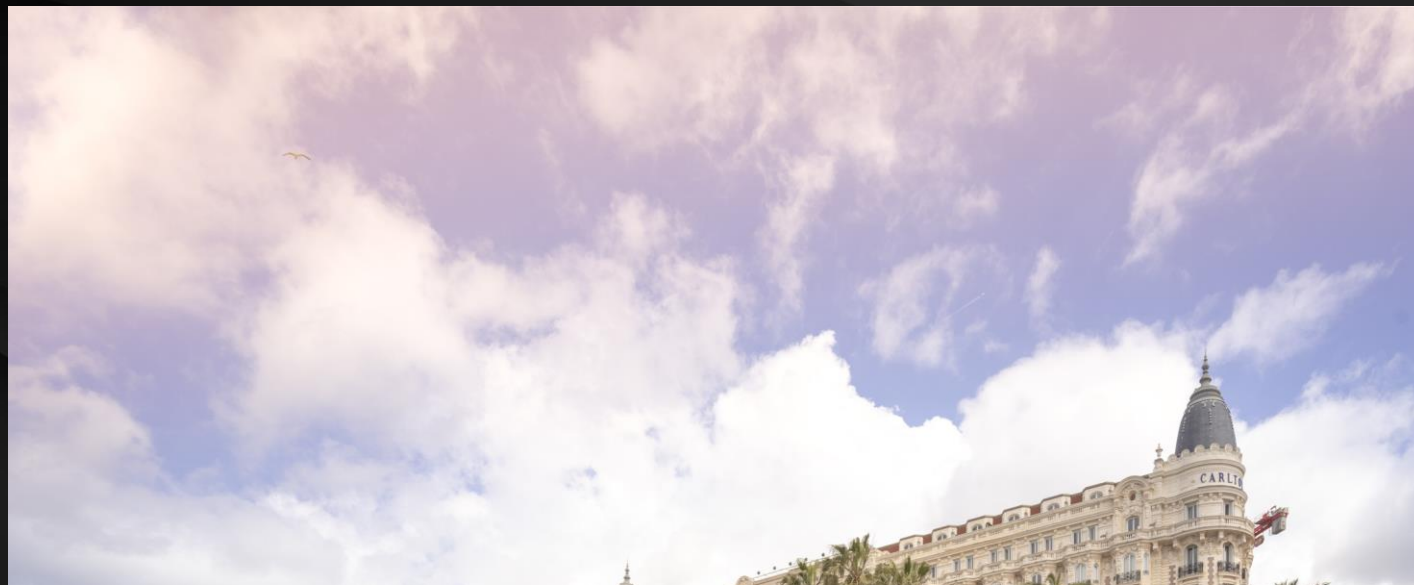


SHOP-IN-SHOPS









RESTAURANTS



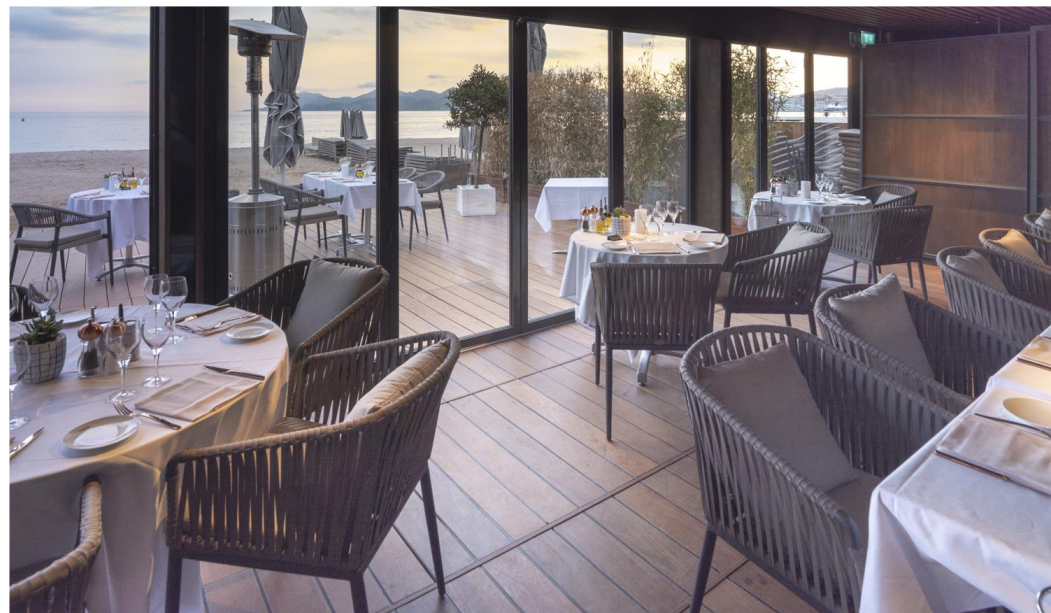
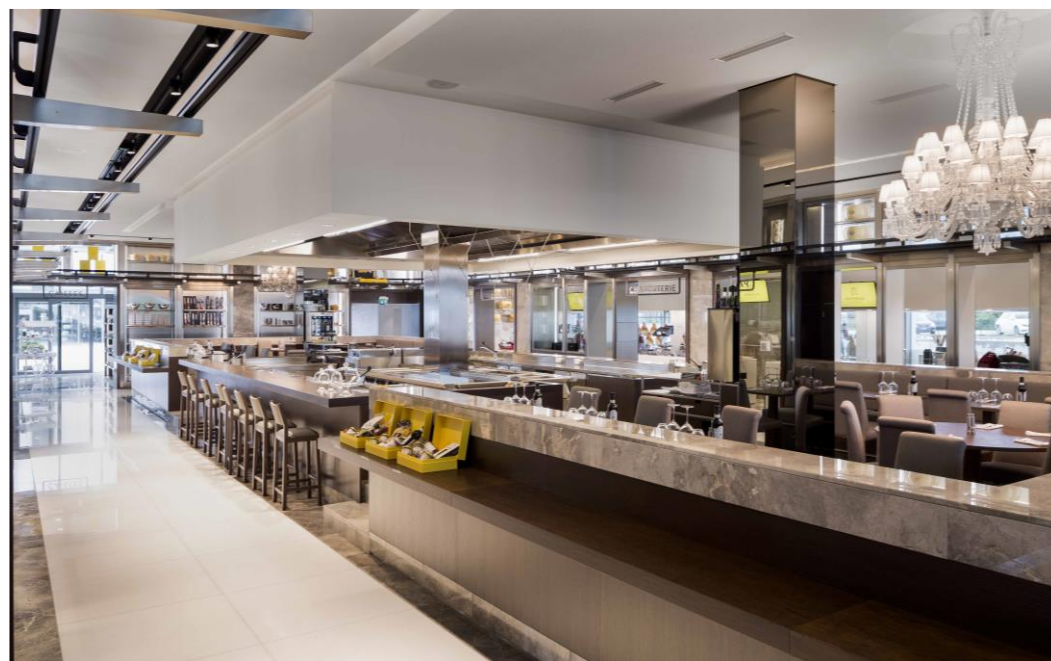














BOOTHS

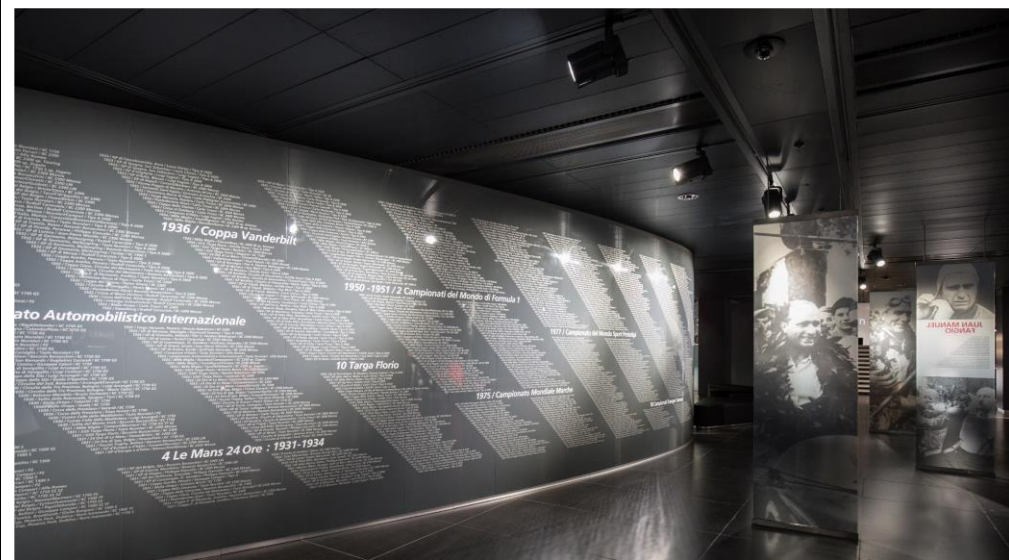
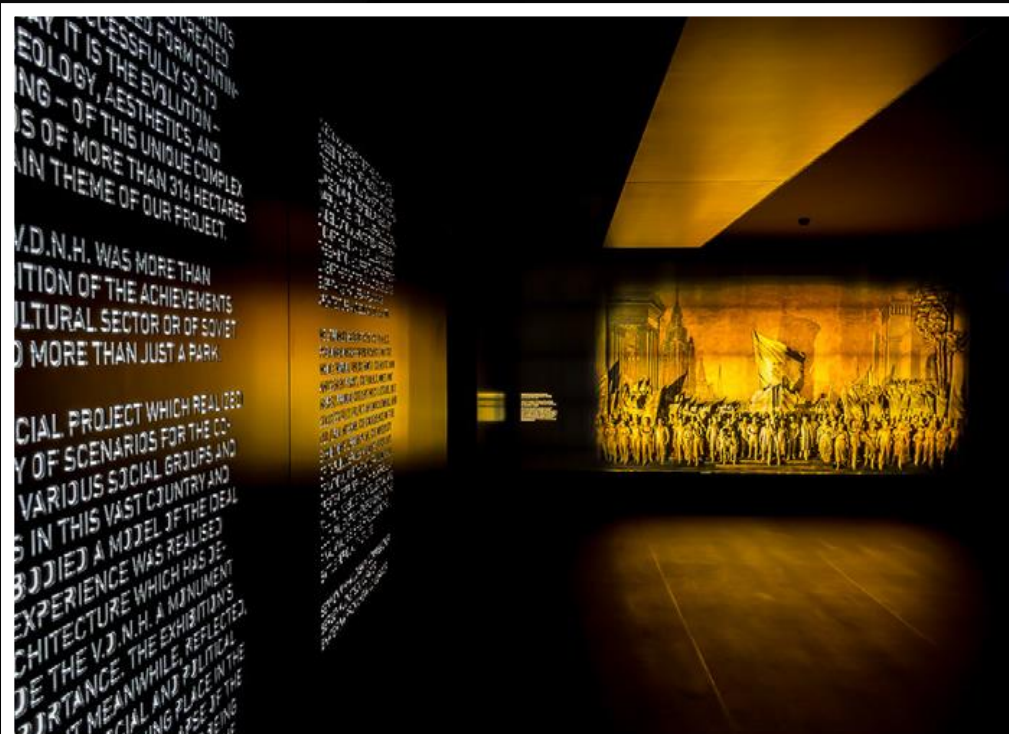




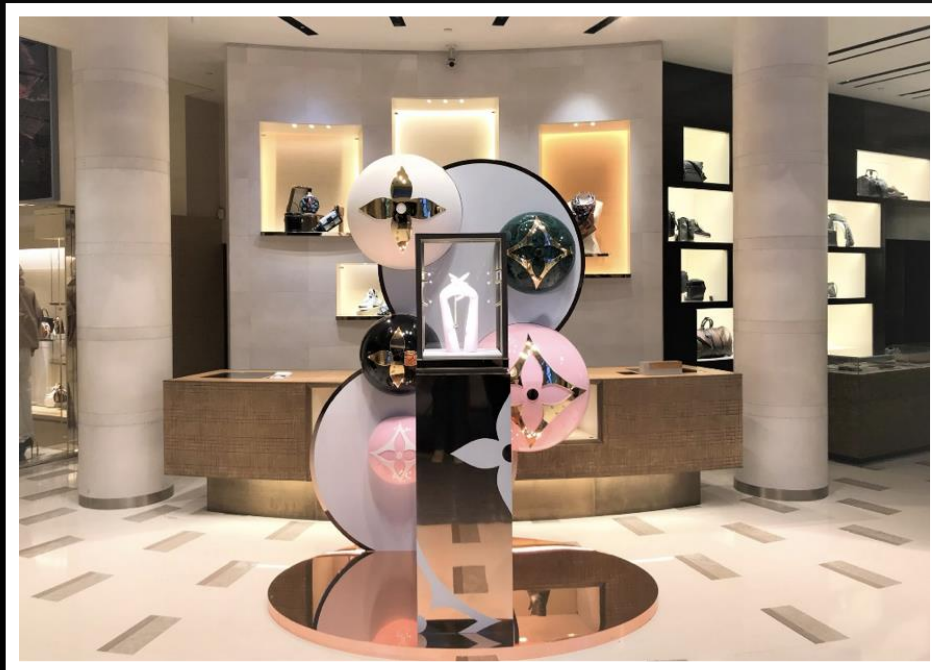


MUSEUMS





WINDOWS









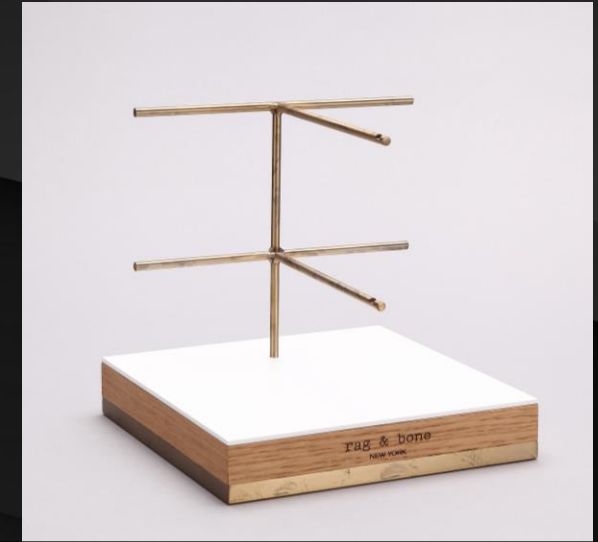
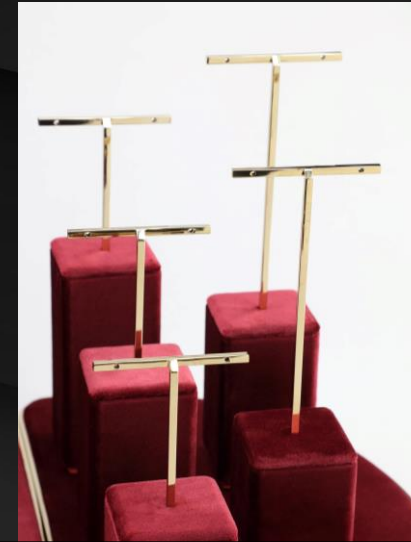
DISPLAYS





PACKAGING





ACCESSORIES





pacteam
group

Thank you

pacteam-group.com